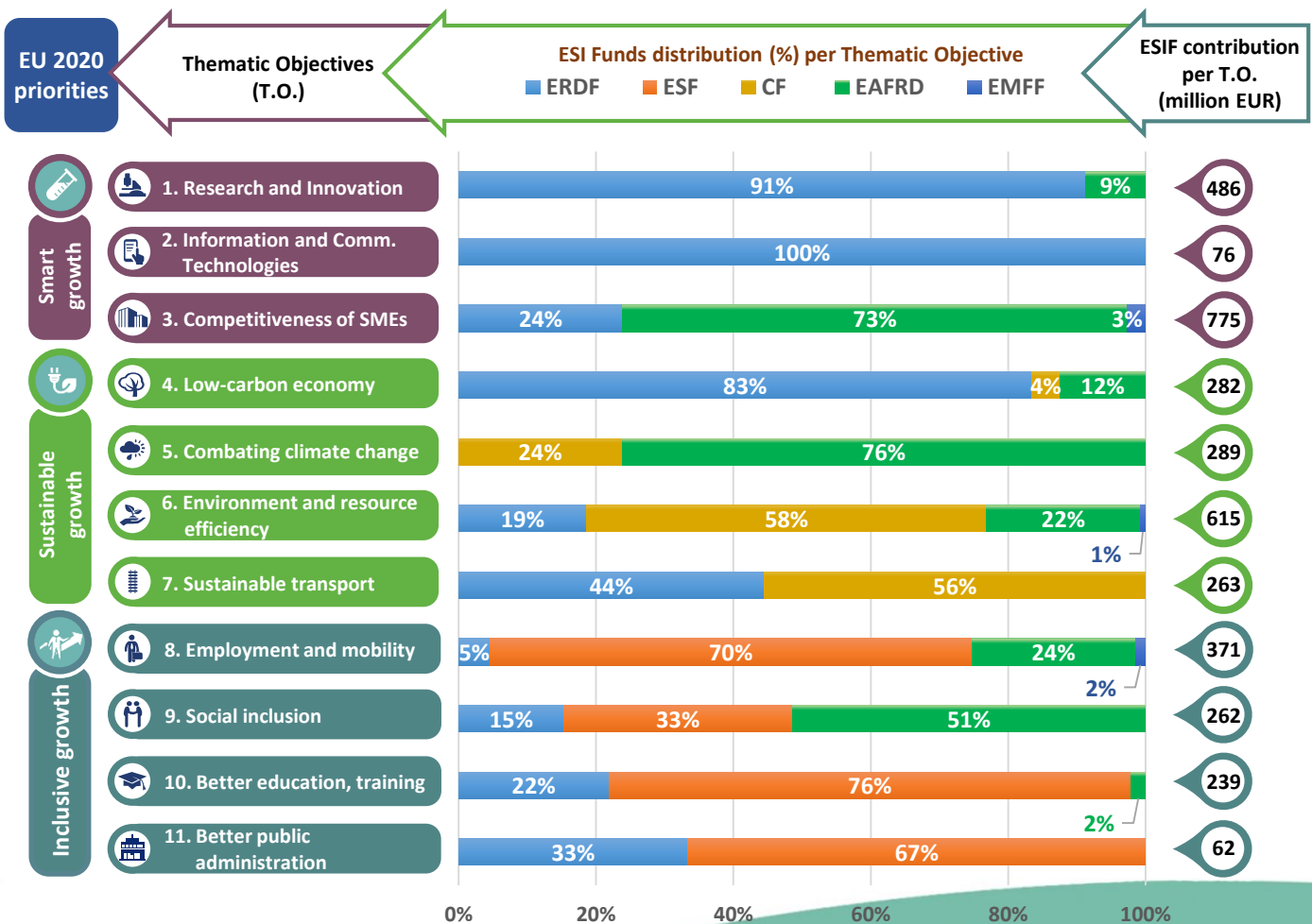
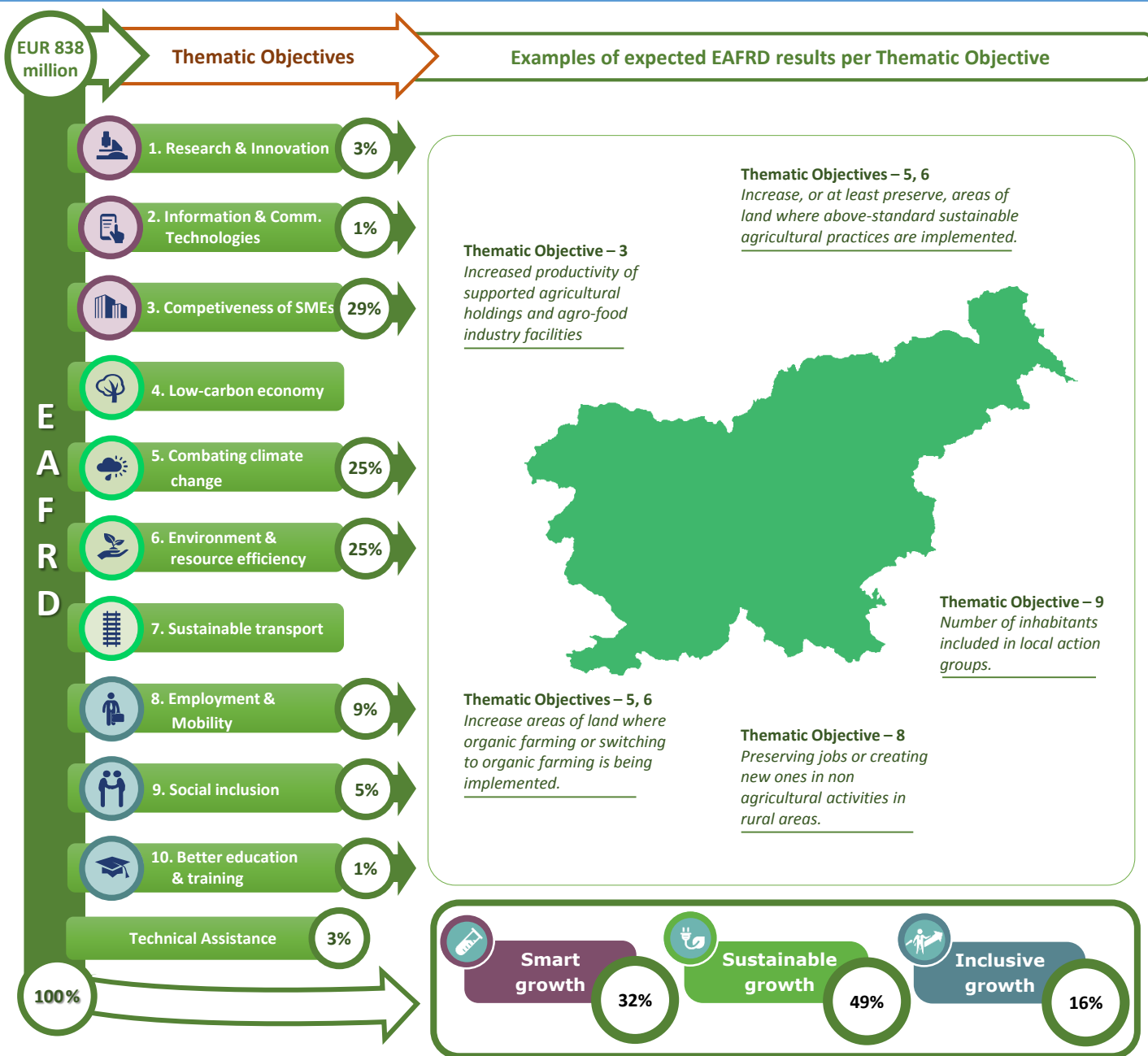


### Thematic objectives supported in Slovenia and ESIF contributions





## Integrated approaches to territorial development in rural areas

### Community Led Local Development (CLLD) / LEADER

**CLLD/LEADER funding in Slovenia:** Minimum 5% of the total EAFRD budget.

**Multi-funded Local Development Strategies:** Yes. EUR 41.8 million will be earmarked from the EAFRD for the implementation of the CLLD approach, which also enables the inclusion of other funds. Slovenia thus decided to additionally support the CLLD approach with resources from the EMFF and ERDF funds, i.e. EUR 5 million from the EMFF and EUR 30 million from the ERDF

**Rural areas population limits:** Between 10 000 and 150 000 inhabitants.

<b>Responsible body:</b>	Government Office for Development and European Cohesion Policy
<b>Date of PA approval:</b>	30/10/2014

**Please note:** The data and figures presented in this summary come from the European Commission approved version of the PA for Slovenia. The information provided in this summary should not be considered a comprehensive account of the original PA content. For the full information please see the original document.

For more information please visit: [http://ec.europa.eu/contracts\\_grants/agreements/index\\_en.htm](http://ec.europa.eu/contracts_grants/agreements/index_en.htm)