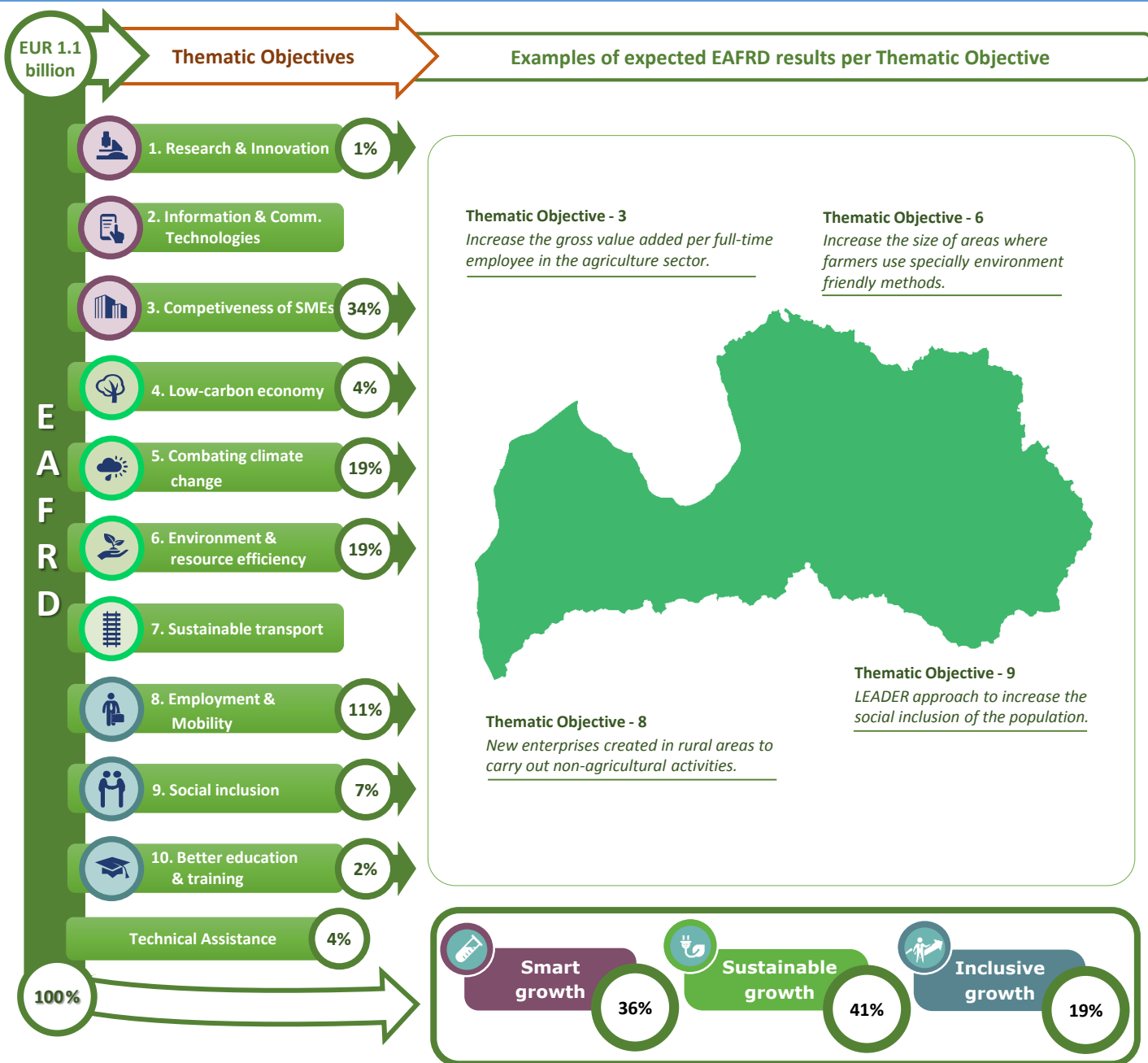


Thematic objectives supported in Latvia and ESIF contributions



EAFRD allocation per Thematic Objective & expected results



Integrated approaches to territorial development in rural areas

Community Led Local Development (CLLD) / LEADER in rural areas

CLLD/LEADER funding in Latvia: Minimum EUR 76.6 million of the EAFRD budget.

Multi-funded Local Development Strategies: Yes. Latvia is planning to implement CLLD attracting more funds, i.e. the EAFRD and EMFF with the EAFRD selected as lead fund.

Rural areas population limits: The entire territory of Latvia, excluding the towns with population over 15 000 inhabitants.

Responsible body:	Ministry of Finance
Date of PA approval:	20/06/2014

Please note: The data and figures presented in this summary come from the European Commission approved version of the PA for Latvia. The information provided in this summary should not be considered a comprehensive account of the original PA content. For the full information please see the original document.

For more information please visit: http://ec.europa.eu/contracts_grants/agreements/index_en.htm