

1. Introduction

Focus Area (FA) 6A is designed to facilitate economic diversification and the creation and development of small and medium sized enterprises as well as job creation.

One of the most important tools used in this focus area is the measure for farm and business development which provides

- business start-up aid for non-agricultural activities in rural areas
- Investments in the creation and development of non-agricultural activities

This can be complemented by a wide range of measures including investments in physical assets, basic services and village renewal, forest investments, cooperation, LEADER, knowledge transfer and advisory services.

The target is to mobilise 6 billion EUR of public and private investments to support the creation of 73 500 jobs.

Rural Development
Programmes addressing
Focus Area 6A

77 out of 112 RDPs¹

Examples of expected achievement (EU-28)



73 500 Jobs created in supported projects



6 Billion EUR investments (public and private)



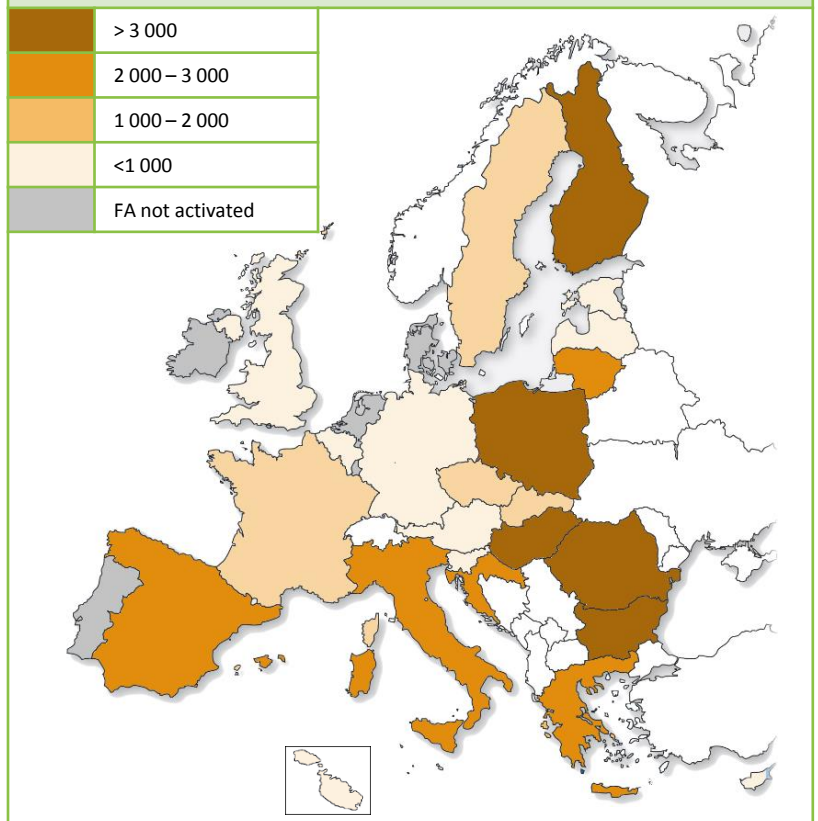
3 % of the planned total public expenditure is allocated to Focus Area 6A



55 000 beneficiaries (holdings) receiving start up aid/support

Focus Area 6A TARGET – No of jobs created in supported projects¹

	> 3 000
	2 000 – 3 000
	1 000 – 2 000
	<1 000
	FA not activated



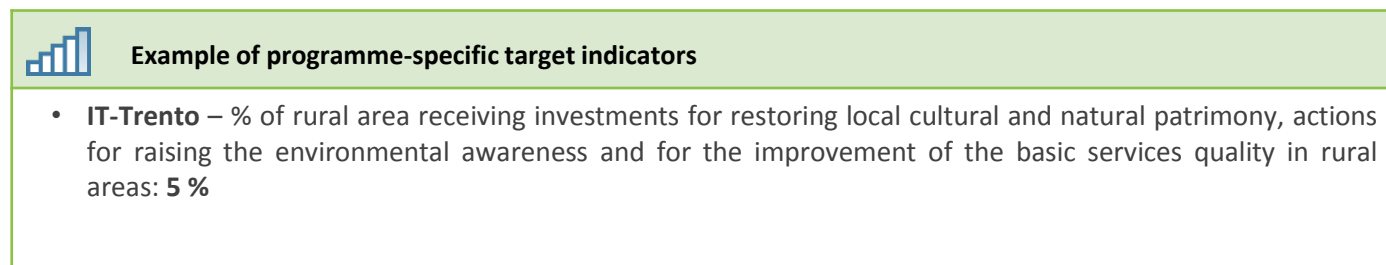
¹ RDPs that do not address FA 6A: BE (1 out of 2), DE (4 out of 13), DK, ES (6 out of 18), FI (1 out of 2), FR (10 out of 28), IE, IT (5 out of 22), LU, NL, PT (3 out of 3), UK (1 out of 4).

2. Expected achievements

This section provides information on the common target indicator defined for the Focus Area and examples of programme-specific target indicators defined by some RDPs to complement the common targets indicators.




In addition to the common targets set at EU level, Member States may set programme specific targets which reflect their particular circumstances. An example of these indicators is provided below.

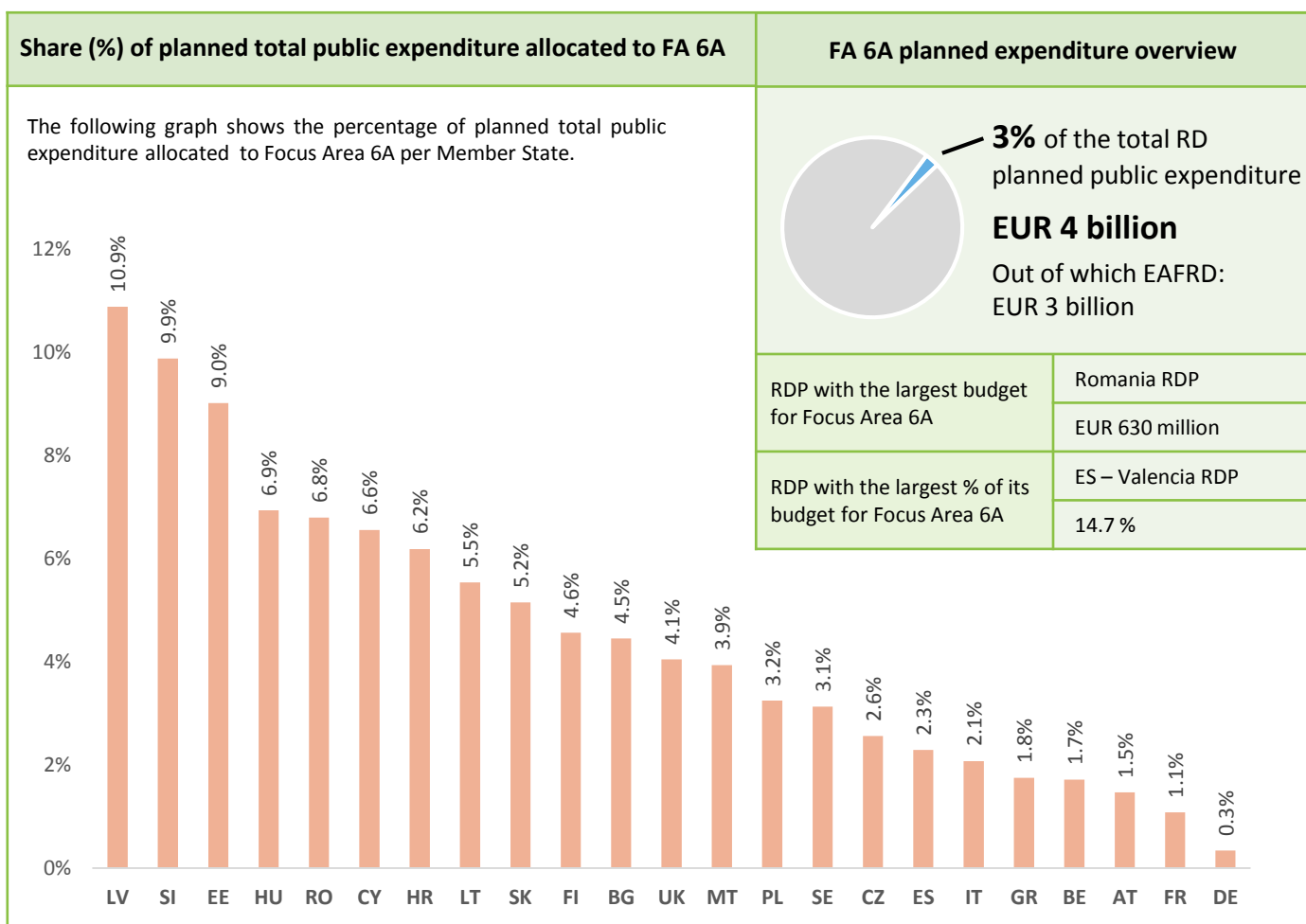


2. Expected achievements

This section provides information on the output indicator. Data provided is aggregated at EU level for those RDPs setting the indicator.

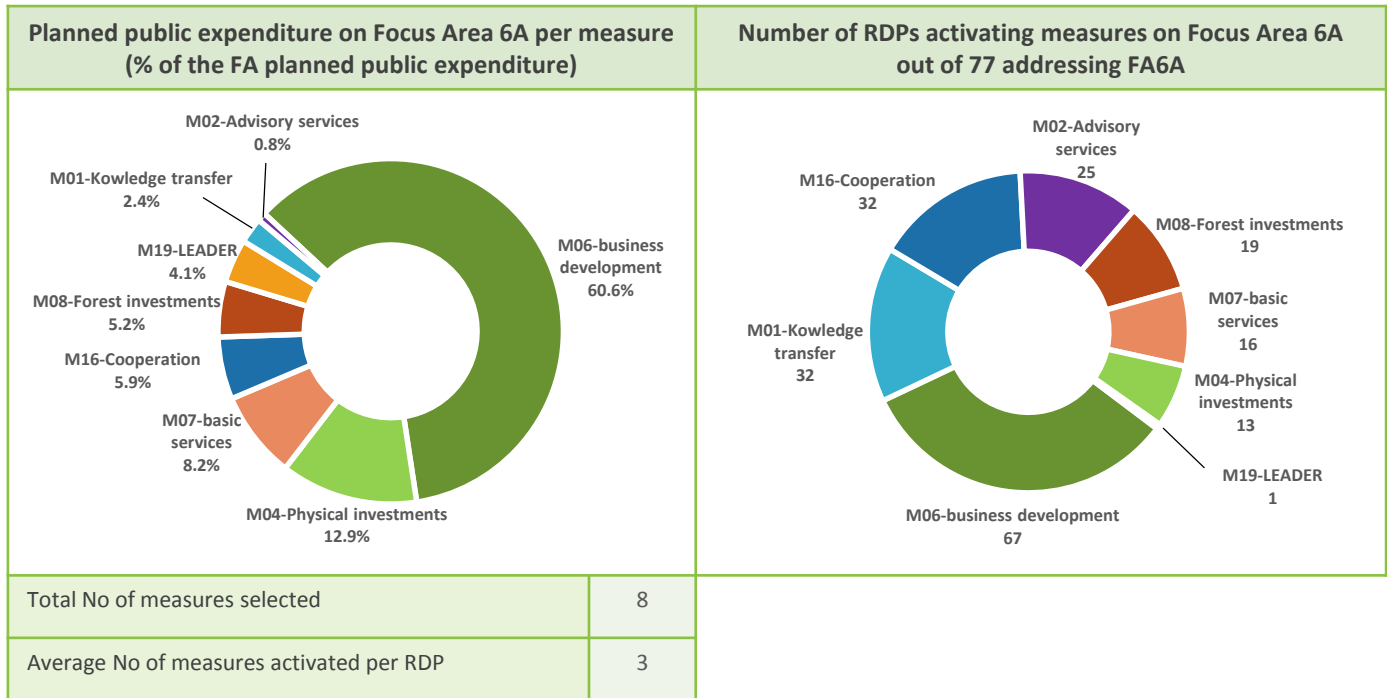
 Main output indicators	EU Total
No of beneficiaries (holdings) receiving start up aid/support for investment in non-agricultural activities in rural areas	54 552
No of beneficiaries trained	184 142
No of beneficiaries advised	47 079
No of beneficiaries of support for investment (in processing and marketing of agriculture products)	2 245
No of operations for investments in forestry technology and primary processing/marketing	1 550

3. Planned total public expenditure on Focus Area 6A



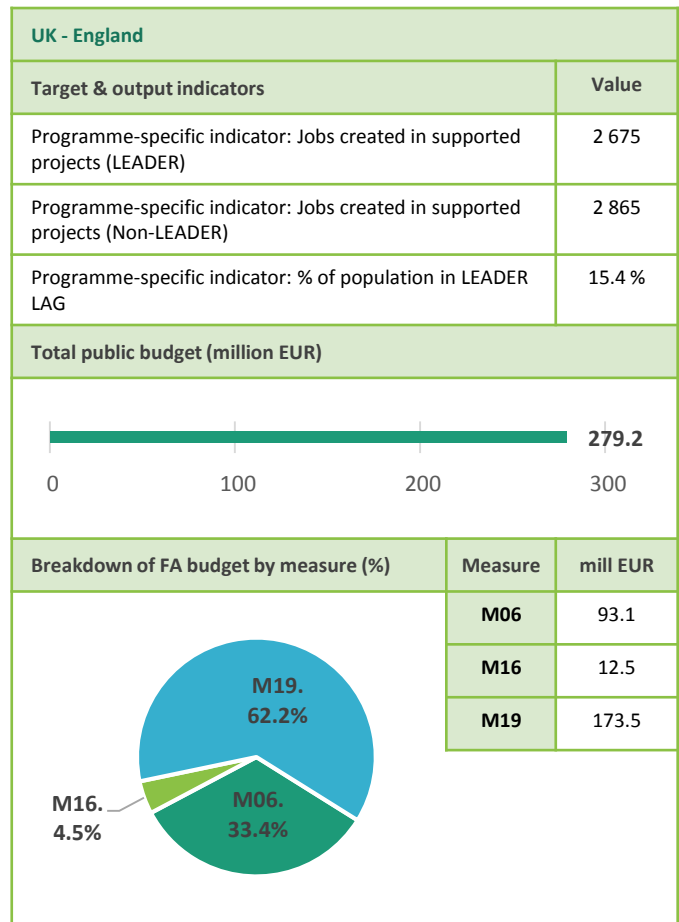
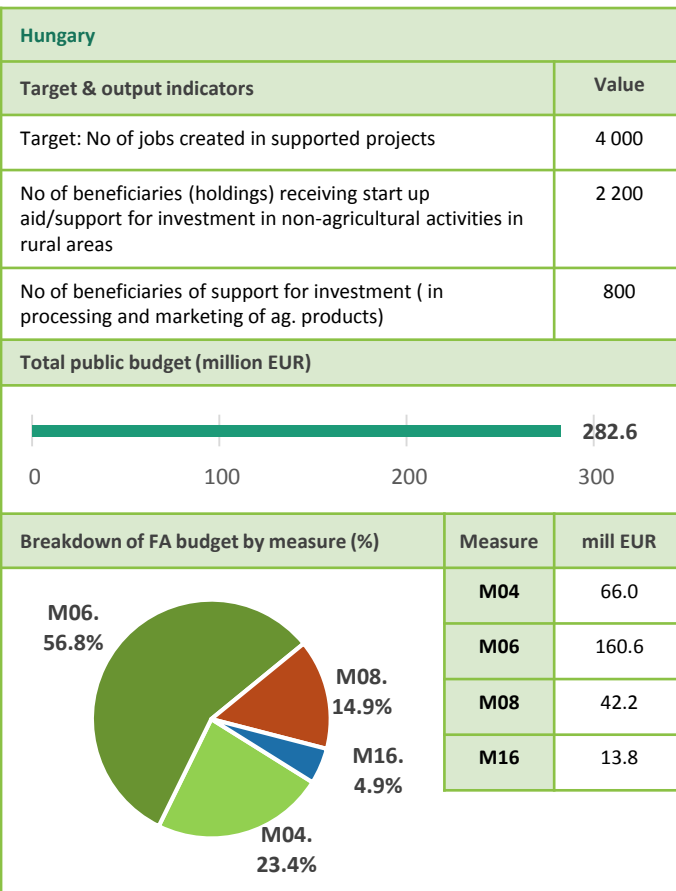
4. Intervention logic at EU level

In 2014-2020, measures within Rural Development Programmes can contribute to several Priorities and Focus Areas in a flexible manner. The following charts provide an indication of the most commonly used measures to address Focus Area 6A, as well as an indication of the number of RDPs in which these measures are selected.



5. Example of RDPs' intervention logic

This section provides two examples of the intervention logic followed by RDPs which illustrate alternative approaches to addressing the objective of improving diversification and job creation.



6. Measure mix per Member State

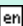
The following table shows the weight that each Member State has given to the various measures available in order to achieve the targets set for this Focus Area. Highlighted cells indicate the highest budget share allocation per MS. The last row presents the EU-28 planned total public expenditure for each measure (million EUR).

 = Highest budget share allocation per MS

	M01 - Knowledge transfer & information actions	M02 - Advisory services	M04 - Investments in physical assets	M06 – Farm & business development	M07- Basic Services	M08 - Investments in forest areas	M16 - Cooperation	M19 - LEADER	Total	Planned expenditure (million EUR)
AT	12%	4%		48%			36%		100 %	111
BE				36%	29%	17%	19%		100 %	27
BG				100%					100 %	128
CY			100%						100%	15
CZ				100%					100%	78
DE	4%	1%	7%	85%			2%		100 %	57
DK										
EE		2%	20%	78%					100 %	86
ES	1%	0.4%	30%	19%	9%	38%	3%		100 %	295
FI	13%			68%			19%		100 %	377
FR	2%	1%	8%	70%	9%	6%	5%		100 %	181
GR				100%					100 %	100
HR				99%		1%			100%	135
HU			23%	57%		15%	5%		100 %	283
IE										
IT	2%	1%		42%	41%	2%	12%		100 %	423
LT	3%	1%		96%					100%	101
LU										
LV				19%	81%				100 %	157
MT				79%			21%		100 %	5
NL										
PL				100%					100 %	414
PT										
RO		1%	53%	47%					100%	630
SE	14%	9%	5%	50%			23%		100%	130
SI				61%		37%	2%		100%	106
SK	1%			96%			3%		100%	104
UK		0.2%	0.3%	37%		1%	4%	57%	100 %	304
EU-28 (%)	2%	1%	13%	61%	8%	5%	6%	4%	100 %	4 245
EU-28 (mil. EUR)	102	34	546	2 575	347	220	248	174	-	

7. Additional information

Rural Development Regulation 2014-2020

Regulation (EU) N° 1305/2013 of the European Parliament and of the Council on support for rural development by the European Agricultural Fund for Rural Development (EAFRD) [PDF ]

RDP Summaries

Developed by the ENRD, these summarise the relevant information of all the RDPs approved [\[here\]](#)

Priority Summary

Developed by the ENRD, these summarise the relevant information of all Priorities [\[here\]](#)

Source of information: All data presented in this summary comes from the European Commission-approved 2014-2020 Rural Development Programmes (118 RDPs in total). In this fiche, public expenditure means total public expenditure (= EAFRD + Member States matching funds + any national top-ups). Due to rounding, there may be small discrepancies between some figures presented. Data includes programme modifications until March 2016. Out of the 118 Rural Development Programmes only the 112 national and regional Programmes have been considered because National Frameworks and National Rural Network Programmes do not allocate budget on Measures. Please note that data and calculations provided do not include M20 (Technical Assistance), or M18 (Complementary payments to Croatia). Icons source: www.flaticon.com

Disclaimer: This document aims to provide an accessible summary of the Rural Development Priority information covering all EU-28 RDPs. The information provided should not be considered a comprehensive account of the original RDP content.

Summary version: Version 1 (Based on SFC data March 2016)

Last updated: March 2016



The European Network for
Rural Development

ENRD Contact Point

Rue de la Loi, 38 Boîte n.4 - 1040

Brussels, Belgium

Tel. +32 2 801 38 00

email: info@enrd.eu

website: <http://enrd.ec.europa.eu/>

