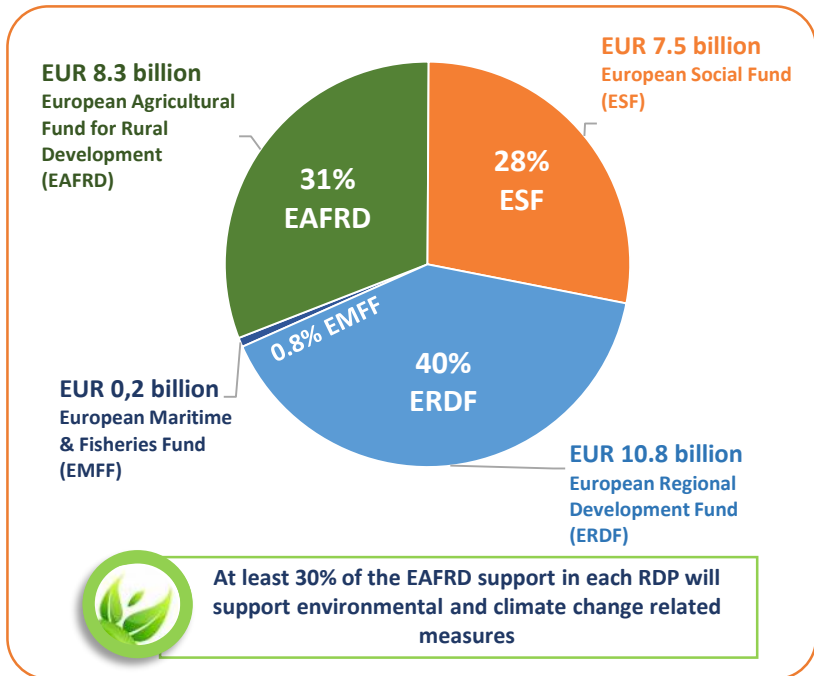
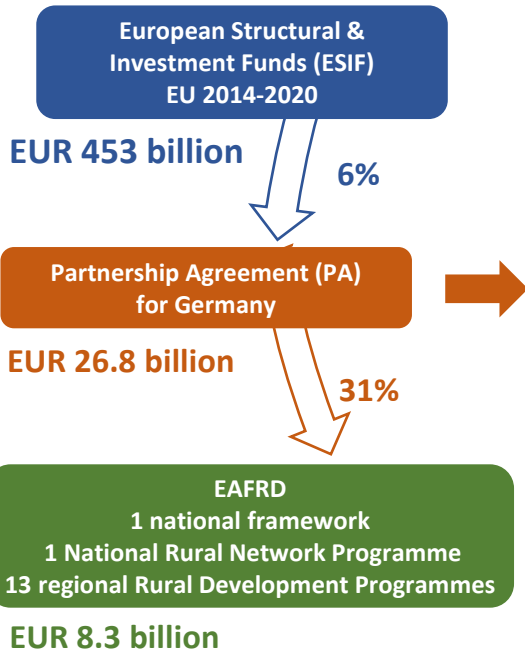
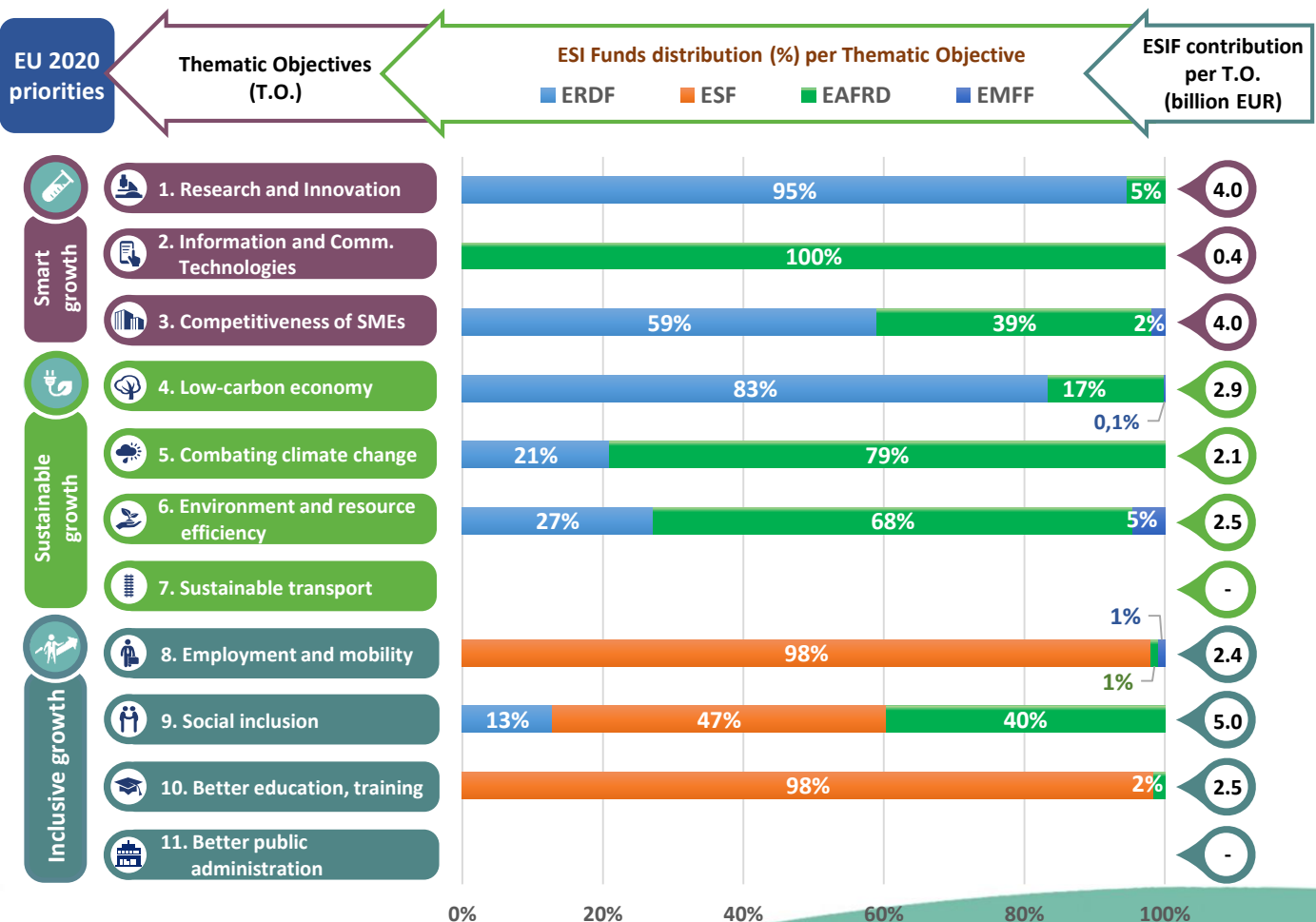
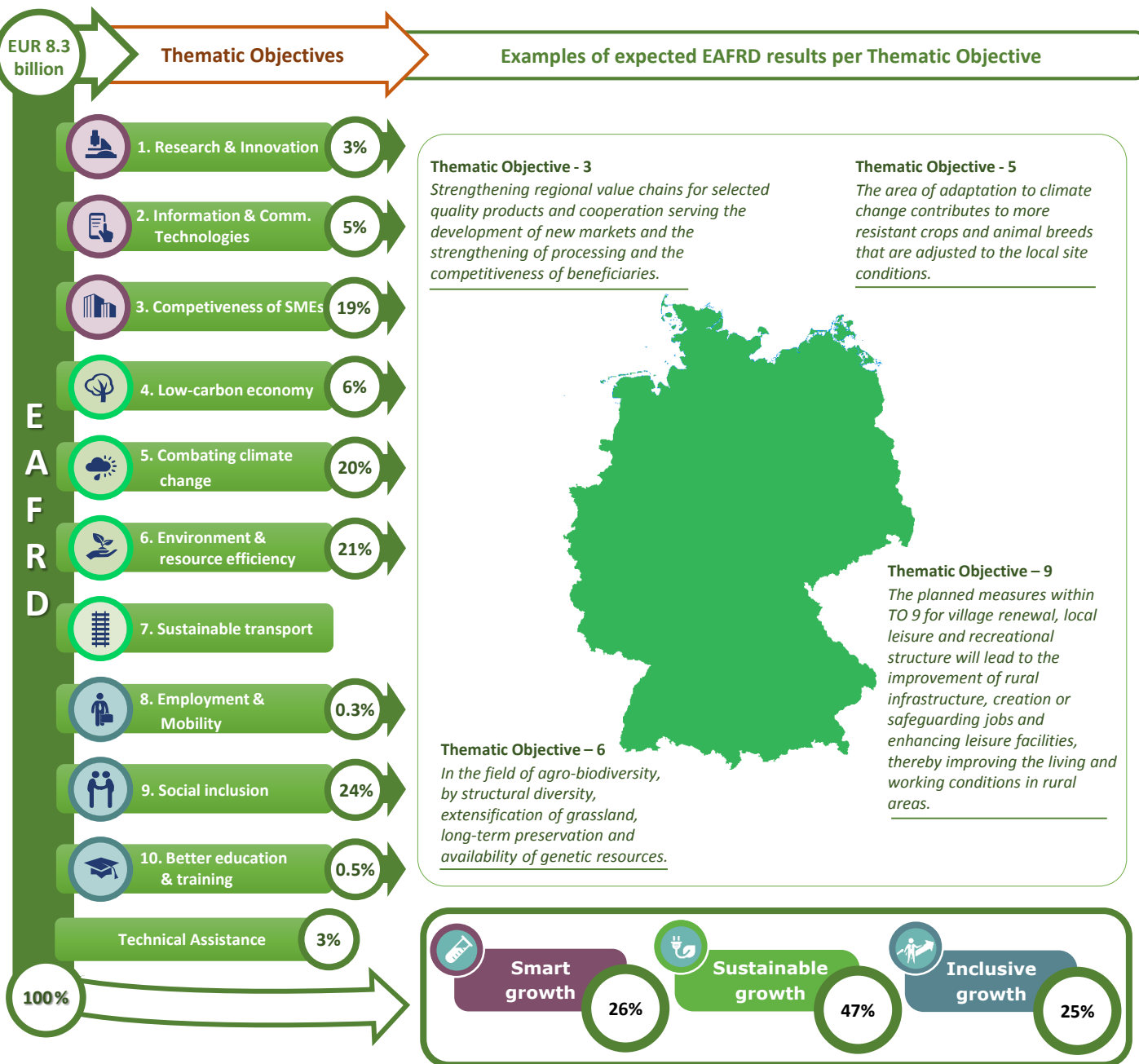


GERMANY



Thematic objectives supported in Germany and ESIF contributions





Integrated approaches to territorial development in rural areas

Community Led Local Development (CLLD) / LEADER

CLLD/LEADER funding in Germany: Minimum 5% of total EAFRD budget.

Multi-funded Local Development Strategies: Exceptional – currently envisaged only in Saxony Anhalt.

Rural areas population limits: Between 10 000 and 150 000 inhabitants.

Responsible body:	Bundesministerium für Wirtschaft und Energie (Federal Ministry of Economics and Energy)
Date of PA approval:	22/05/2014

Please note: The data and figures presented in this summary come from the European Commission approved version of the PA for Germany. The information provided in this summary should not be considered a comprehensive account of the original PA content. For the full information please see the original document.

For more information please visit: http://ec.europa.eu/contracts_grants/agreements/index_en.htm